

GN 138 | Hinges for narrow jamb

Zinc alloy



- 1
- 2
- 3
- 4
- 5
- 6
- 7
- 8
- 9
- 10
- 11
- 12
- 13
- 14
- 15
- 16
- 17
- 18

TYPE

- Type **A**: with threaded blind bores

Die-cast zinc alloy **ZD**

epoxy resin coating

black, RAL 9005, matte finish **SW**

silver, RAL 9006, matte finish **SR**

Pin

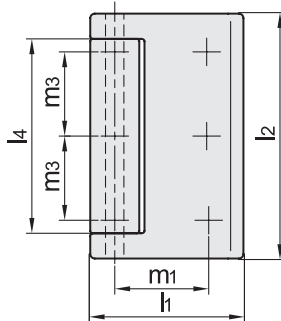
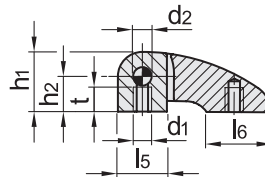
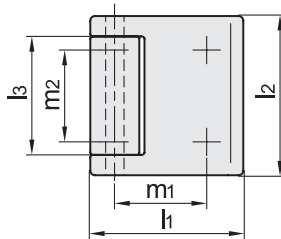
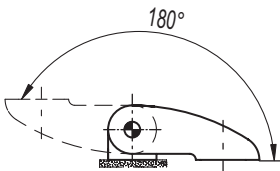
AISI 303 stainless steel

FEATURES AND APPLICATIONS

With their attractive design, hinges GN 138 are suitable for use in plant and machinery where a well-designed and stylish appearance is important.

The concealed and tamper-proof mounting from the rear highlights and enhances the special appearance of the hinge.

The hole spacings of the mounting holes m_1 and m_2 of the short version match typical hinges available on the market to allow use as a replacement hinge.



Conversion Table	
1 mm = 0.039 inch	
mm	inch
42	1.65
52	2.05
62	2.44
65	2.56
80	3.15
82	3.23
95	3.74
125	4.92

GN 138-SW

GN 138-SR

METRIC

Code	Description	Code	Description	l1	l2	d1	d2	h1	h2	l3	l4	l5	l6	m1	m2	m3	t	Δ
GN.79103	GN 138-ZD-40-42-A-SW	GN.79101	GN 138-ZD-40-42-A-SR	40	42	M5	5	15	9	34	-	12	18	25	25	-	6	73
GN.79107	GN 138-ZD-40-65-A-SW	GN.79105	GN 138-ZD-40-65-A-SR	40	65	M5	5	15	9	-	54	12	18	25	-	22.5	6	112
GN.79113	GN 138-ZD-50-52-A-SW	GN.79111	GN 138-ZD-50-52-A-SR	50	52	M6	6	19.5	11.5	39	-	16	21	30	30	-	8	129
GN.79117	GN 138-ZD-50-80-A-SW	GN.79115	GN 138-ZD-50-80-A-SR	50	80	M6	6	19.5	11.5	-	64	16	21	30	-	27.5	8	211
GN.79123	GN 138-ZD-60-62-A-SW	GN.79121	GN 138-ZD-60-62-A-SR	60	62	M6	8	23.5	13.5	47	-	20	24	36	36	-	9	238
GN.79127	GN 138-ZD-60-95-A-SW	GN.79125	GN 138-ZD-60-95-A-SR	60	95	M6	8	23.5	13.5	-	77	20	24	36	-	33	9	351
GN.79137	GN 138-ZD-80-82-A-SW	GN.79135	GN 138-ZD-80-82-A-SR	80	82	M8	10	29	17	64	-	24	32	50	50	-	12	505
GN.79133	GN 138-ZD-80-125-A-SW	GN.79131	GN 138-ZD-80-125-A-SR	80	125	M8	10	29	17	-	104	24	32	50	-	45	12	742

Hinges and accessories